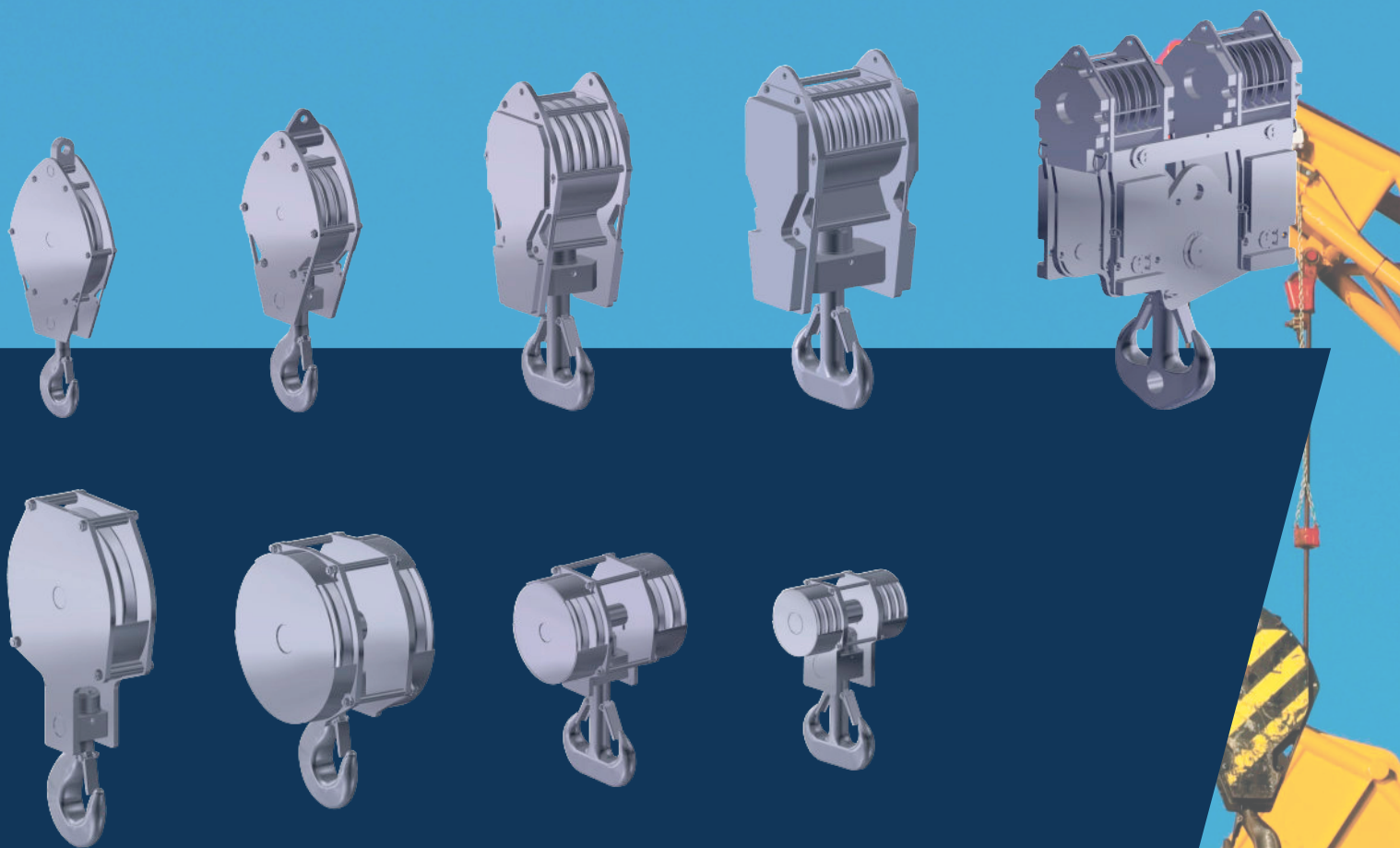




HOOK BLOCKS HOOKS SHEAVES

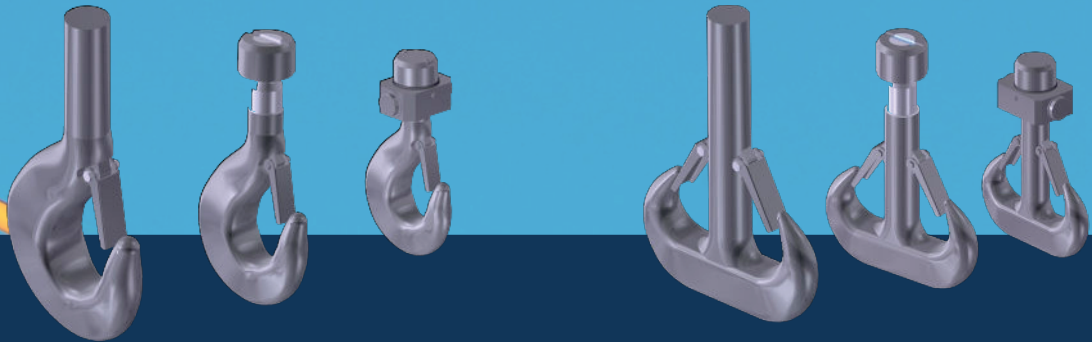


HOOK BLOCKS, HOOKS AND SHEAVES



HOOK BLOCKS

- ◆ Hook blocks for mobile cranes / overhead travelling cranes and shipboard cranes
- ◆ Single / Ramshorn hooks
- ◆ 1 – multiple sheaves
- ◆ Sheaves on double cylindrical roller bearing or bronze bushing
- ◆ Twin Hookblock system
- ◆ Up to any size
- ◆ Up to any weight
- ◆ Max. production time 6 weeks up to 600 Mtons / 662 UStons
- ◆ Paint specifications on request
- ◆ Hooks tested at -40 °C / -40 °F



HOOKS

- ◆ Single or double hook
- ◆ Incl. crosshead possible
- ◆ Lockable safety latch (OSHA)
- ◆ Acc. DIN15401/2 and EN 13001
- ◆ From Stock up till WLL 250 Mtons / 275 UStons
- ◆ Capacity up till 1250 Mtons / 1378 UStons
- ◆ Tested at -40 °C / -40 °F



SHEAVES

- ◆ Roll-forged / Welded / Machined from Solid / Nylon
- ◆ On bronze or double cylindrical roller bearing
- ◆ Horizontal lead sheaves
- ◆ Vertical lead sheaves
- ◆ On request sheave hardened up to $\pm 350\text{HB}$ (35HRC)



SOCKETS ♦ SWIVELS ♦ HOOK BLOCKS ♦ SHEAVES ♦ TURNBUCKLES ♦ SNATCHBLOCKS