



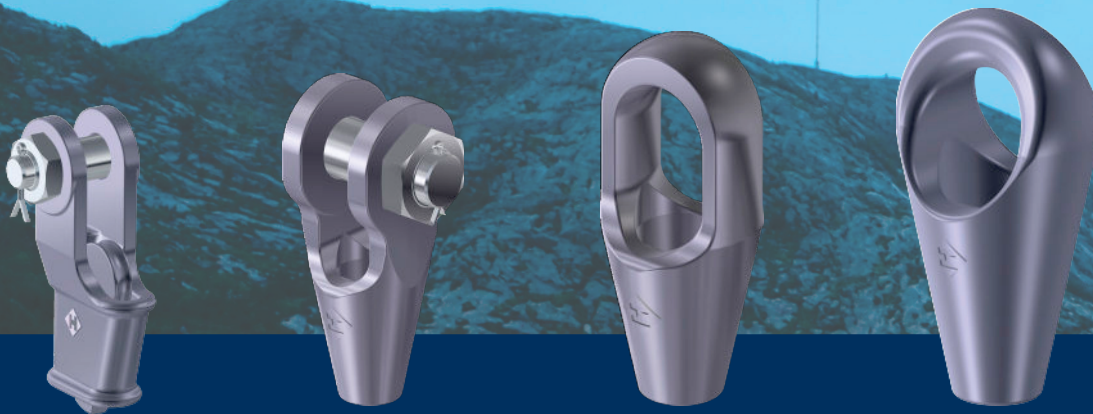
SOCKETS AND SWIVELS



wirerope@hollowayhouston.com
www.hhilifting.com

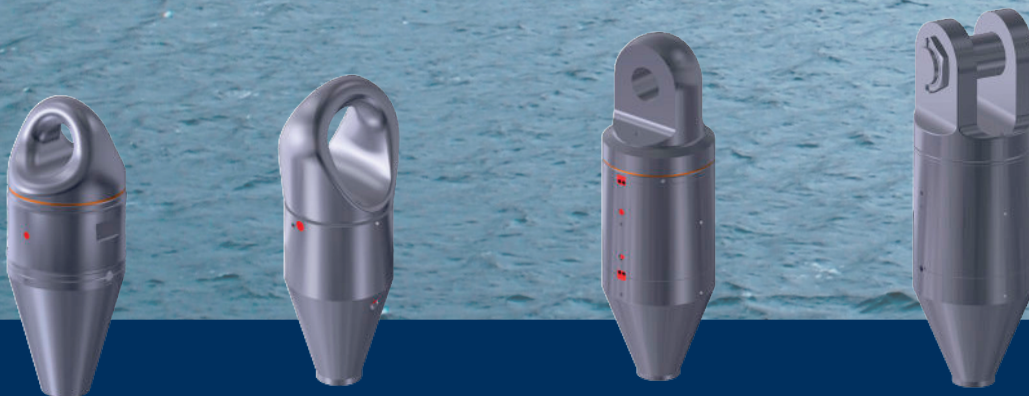


SOCKETS AND SWIVELS



SOCKETS

- ◆ DNVGL ST-0378 Type Approved (Spelter Sockets)
- ◆ CR Sockets DNVGL OS-E304 (Mooring) available from Stock
- ◆ From 6 – 167mm ($\frac{1}{4}$ – 6 $\frac{1}{2}$ ") wire rope
- ◆ Painted or Galvanized
- ◆ Standard Pin or Safety Pin with Nut and Cotterpin
- ◆ Temp. Range= -40 °C up to 200 °C / -40 °F up to 392 °F



SWIVEL SOCKETS

- ◆ CRX Rope Swivels / CR Rope Swivels / Swivel Sockets
- ◆ Can be opened for connecting the rope with resin
- ◆ Swiveling under load
- ◆ From 2" – 4 $\frac{1}{2}$ " available
- ◆ Connecting dimensions on request (Swivel Socket)



SWIVELS AND BALLWEIGHTS

- ◆ Closed Body Swivels / Heavy Duty Swivels / CR-Chain Swivels / CRX Mooring Swivels / Ballweights (Overhaul ball)
- ◆ Capacity up to 250 Mtons / 275 UStons
- ◆ Use till waterdepth of 25 meter / 82 ft ¼ inch (Closed Body Swivels)
- ◆ Eye/Eye, Jaw/Jaw, or Eye/Jaw (Closed Body Swivels)
- ◆ Suitable for deepwater applications (Heavy Duty Swivels / CRX Mooring Swivels / CR-Chain Swivels)
- ◆ Standard Kenter Shackle or CR-Connector connection CRX Mooring Swivels
- ◆ Standard Shackle connection (Heavy Duty Swivels)
- ◆ Eye/Eye, Jaw/Jaw or Eye/Jaw (Heavy Duty Swivels)
- ◆ DNVGL OS-E302 approved (CRX Mooring Swivels)
- ◆ 2 ½" – 3 ½" from Stock fully certified (CRX Mooring Swivels)
- ◆ Pressure Compensator on request (Heavy Duty Swivels)
- ◆ 9,5 up to 1750 Mtons / 10,5 up to 1945 UStons



SOCKETS ♦ SWIVELS ♦ HOOK BLOCKS ♦ SHEAVES ♦ TURNBUCKLES ♦ SNATCHBLOCKS